

Gerrans School News

School Contact 01872 580442 or
email secretary@gerrans.cornwall.sch.uk

May 2021

Attendance 27th April - 25th May
KS1 98.8% KS2 97.2% Whole School 98 %

In order to maintain OFSTED's judgement of Personal development, Behaviour and Welfare as outstanding this percentage is expected to be at least 95%

Attendance ratings **Good attendance ~ 95% - 100%**

Poor Attendance ~ 90% - 94%

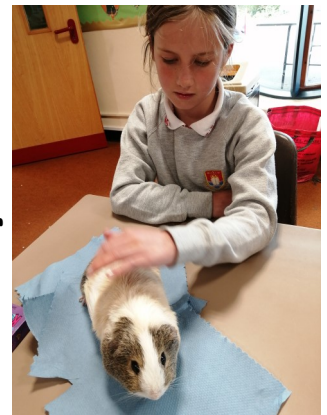
Unsatisfactory Attendance ~ below 90%

Welcome

Welcome to Sophie our new cook. We all look forward to
enjoying her
fabulous freshly cooked lunches.



We also welcome Reggie and Rodney our
new school guinea pigs. They are set-
tling in well and enjoying their new
home.



All staff would like to congratulate all our children for their good
attitudes and fun sense of humour this half term. Learning with them is a real
pleasure, we hope that all families have a sunny half term.

Please remember we have an INSET day on Friday 11th June and school will
be closed to all pupils.

Transition Day

Our annual transition day will take place on Thursday 1st July. Children will be invited into the year group they will be in September. However due to Covid restrictions this will be a morning of outside learning and children will return to their usual bubbles for lunch and the afternoon. New nursery children will be invited for the morning.

If the weather is against us we reschedule for Tuesday 6th July.

The Roseland Youth Sailing Trust

Despite the windy weather sailing is continuing and our sailors are progressing well.

Many thanks to The Roseland Youth Sailing Trust for funding these sessions.



Inset Days for 2021/22

Friday 11th June 21
Monday 6th September 21
Monday 1st November 21
Friday 17th December 21
Friday 10th June 22
Monday 25th July 22
Tuesday 26th July 22

PE

Unfortunately this week is the last week that Jodie from Go Active is coming into school for our PE sessions. As well as afternoon PE she has also ran a KS2 after school club.

We would like to thank Jodie for the wonderful sessions and hope to continue these again in the Autumn Term.



End of Year School Production

After half term all children will be working towards a performance of Mid Summer Night's Dream.

Again due to Covid restrictions all rehearsals will take place outside in the school grounds. We are hoping to be able to invite family groups to outside performances Thursday 15th July in the morning and on Friday 16th July in the evening. Both of which will be weather dependent.

We will, however, film a final production which will be available via Facebook and website.



EYFS/KS1

What a busy few weeks we have had in class!

- ♦ Playing games in Maths whilst learning about adding tens to two digit numbers.
- ♦ Making gingerbread men, writing instructions and rehearsing a gingerbread play
- ♦ Sketching our flower tyres and looking forward to watching how they grow and change over the coming weeks.



KS2

We are looking forward to our KS2 camp on the 17th and 18th June.

Please use half term to organise and name all kit.

If you haven't already please can you return your completed camp medical forms to Mrs Hooper.

All children have now been given their Curriculum Task, these are due in on the 30th June



Bikeability

Congratulations to Danny, Manny and Maddie for passing their Level 2 Bikeability.



Diary Dates

Monday 31st May - Friday 4th June ~ Half Term

Wednesday 9th June ~ Tempest School Class Photographs

Friday 11th June ~ INSET DAY - School Closed to pupils

Thursday 17th June - Friday 18th June ~ KS2 Camp

Thursday 1st July ~ Year 6 Welcome Day The Roseland (TBC) &

Transition Morning for Nursery, Reception — Year 5

Tuesday 6th July ~ Reserve Transition Morning

Thursday 15th July ~ Morning End Of Year Performance

Friday 16th July ~ Evening End Of Year Performance

Wednesday 21st July ~ Sports Day

Friday 23rd July ~ Last Day of Term

~ 1pm Leavers Assembly (TBC)

Early finish times to be confirmed

Monday 6th September ~ INSET DAY - School Closed to pupils

Tuesday 7th September ~ Autumn Term starts

Monday 25th October - Friday 29th October ~ Half Term

Monday 1st November ~ INSET DAY - School Closed to pupils

Friday 17th December ~ INSET DAY - School Closed to pupils

Monday 20th December - Monday 3rd January 22 ~ Christmas Holidays

Tuesday 4th January 22 ~ Spring Term starts

Monday 21st February - Friday 25th February ~ Half Term

Monday 11th April - Friday 22nd April ~ Easter Holidays

Monday 2nd May ~ Bank Holiday—School Closed to pupils

Monday 30th May - Friday 3rd June ~ Half Term

Friday 10th June ~ INSET DAY - School Closed to pupils

Friday 22nd July Last Day of Term

Monday 25th & Tuesday 26th July - INSET DAYS ~ School Closed to pupils

Please be aware some of these dates are to be confirmed and may be subject to change